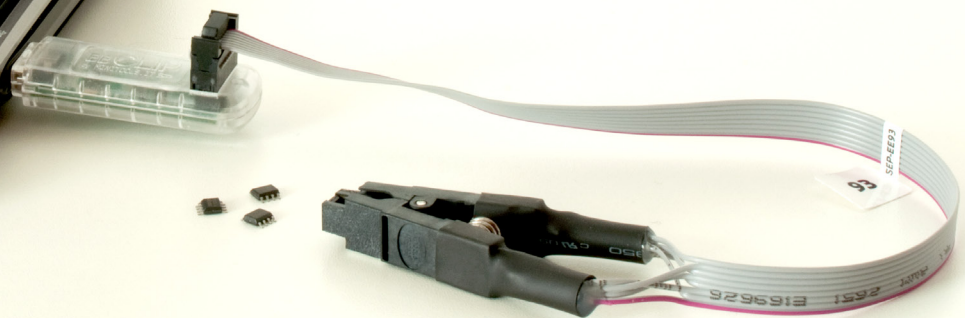


EECLIP

by MINITOOLS.IT 

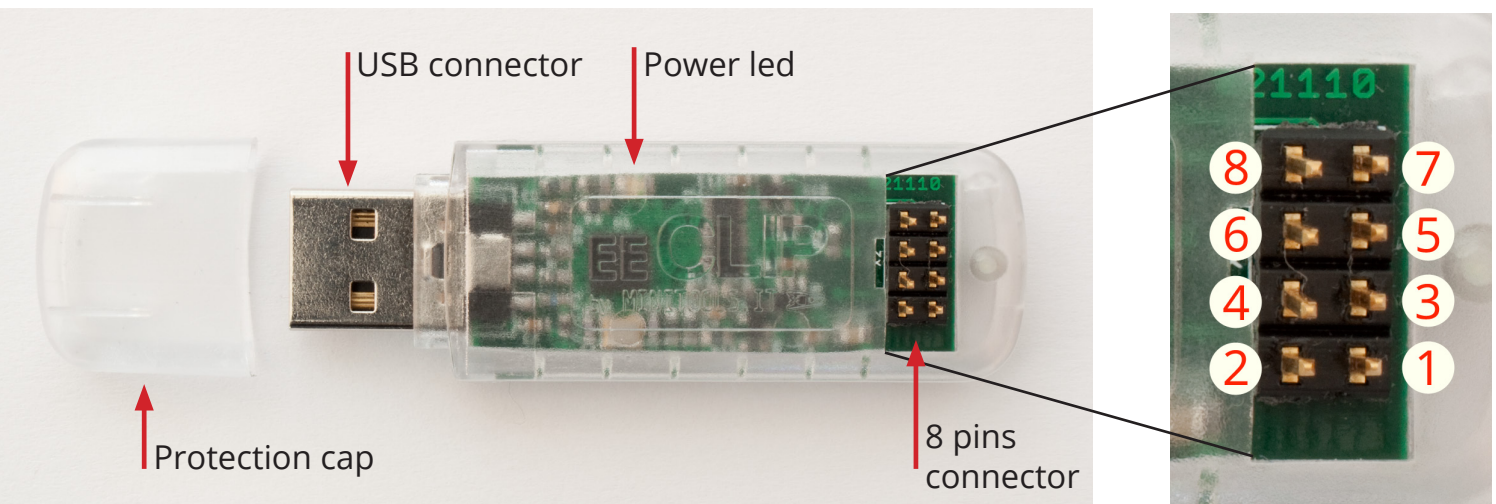


EECLIP MANUAL

www.eeclip.com

All rights reserved. This document is property of Savi Elettronica Srl. This manual or parts of it cannot be reproduced without prior authorization of Savi Elettronica Srl. Based on the evolution of the EEClip product or the bundled software the informations contained in this manual can change.

EECLIP ELEMENTS

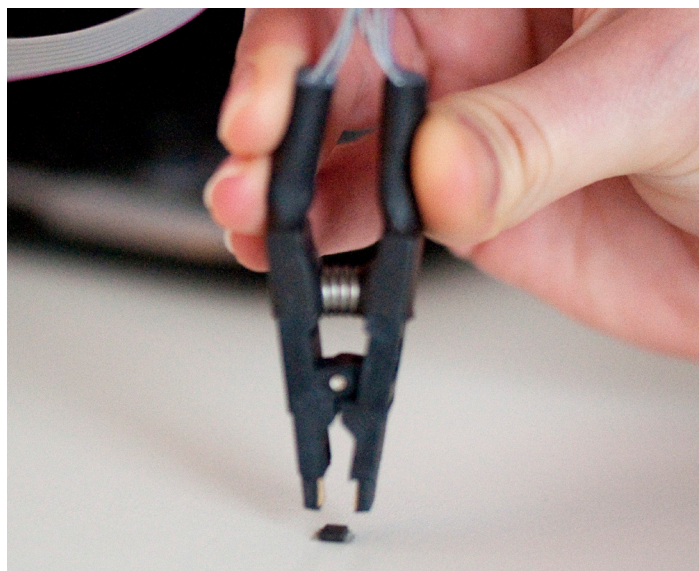


INTRODUCTION

EECLIP is a **universal programmer for SOP8 serial eeproms** devices which works through common PC USB port. It doesn't require additional power supply. With the EEclip programmer most of the common serial interfaces eeproms can be programmed (SPI, I2C or IIC, Microwire) even eeproms with SOP8 packages with the adaptable cables.

Supplied with Windows systems software (XP/Vista/7 – both 32 and 64 versions) that can read, write and erase the connected eeproms. The software **automatically recognizes more than 2000 supported devices** (autodetect function). Software can also automatically update the EEclip firmware.

Pin	Description
1	Data Out
2	Write Protect
3	Chip Select
4	Gnd
5	Clock
6	Pre
7	Data In
8	Vcc



SYSTEM REQUIREMENTS

To install EEclip software and drivers the logged user must be **Administrator** and an **Internet connection** is necessary.

Supported Windows versions:

Windows XP/Vista/7 (32/64 bit versions)

Required software:

Windows Installer 3.1

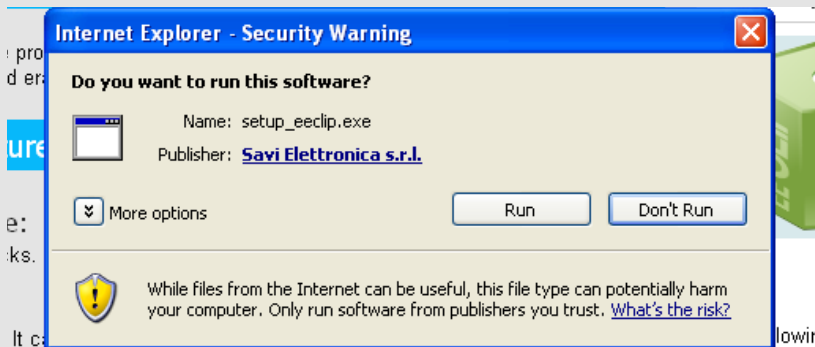
Microsoft .NET Framework 3.5 SP1

INSTALLATION



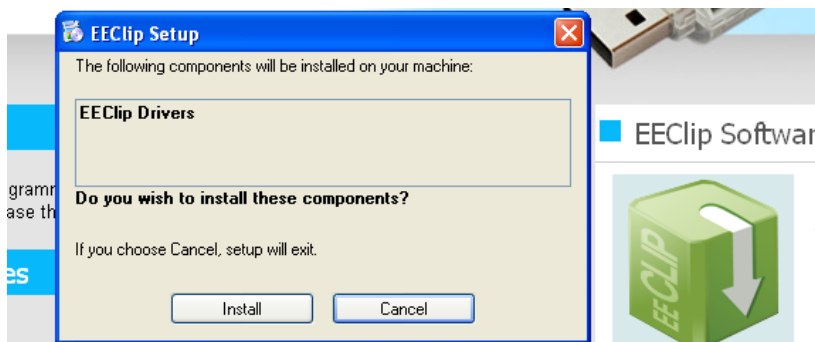
Before connecting EEclip to the computer go to **www.eecclip.com** and download EEclip software.

1



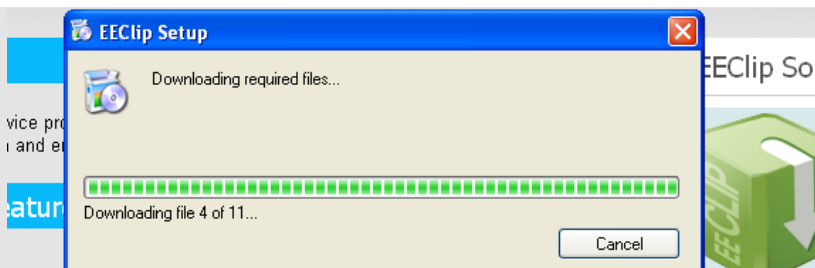
Click on **Run** to start software installation.

2



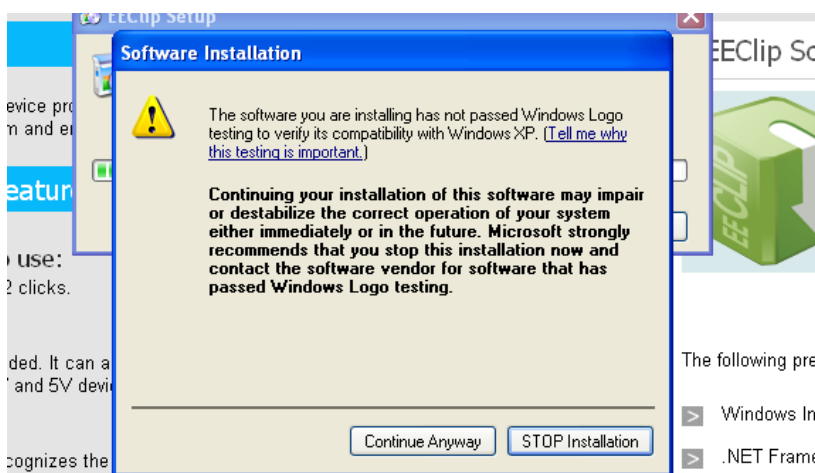
You will be ready to install EEclip Drivers.

3



Wait until software and driver download are complete.

4

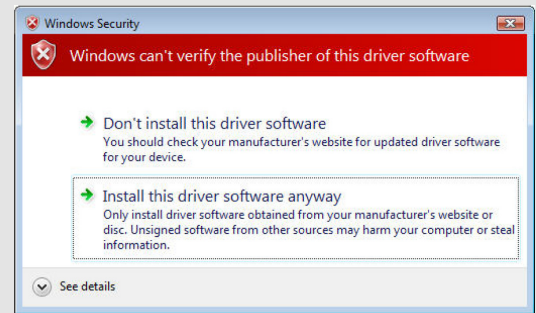


Click on **Continue Anyway** to proceed with installation and ignore Microsoft warning about Windows Logo testing.

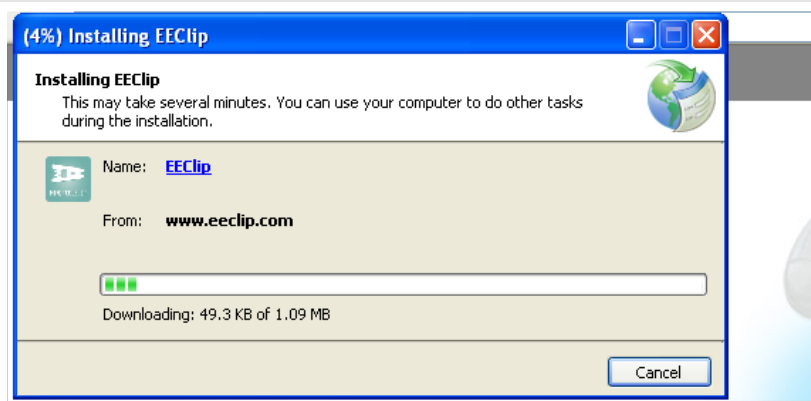
5



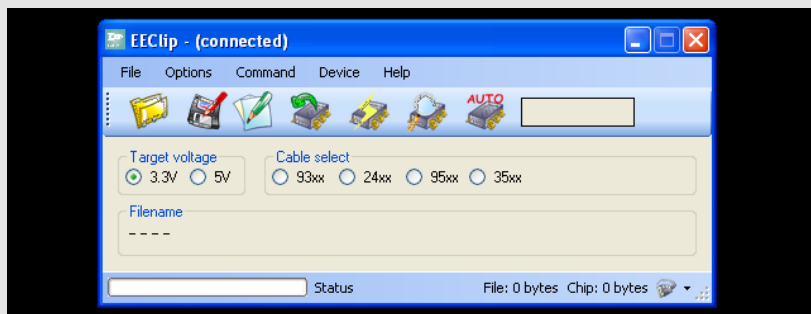
- 6 Click on **Continue Anyway** to proceed with hardware installation.



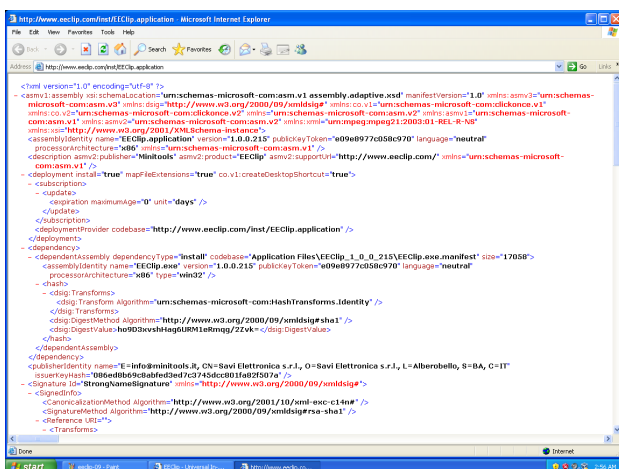
On Windows Vista click on **Install this driver software anyway**



- 7 Wait until software's download is finished.



- 8 As soon as the installation is complete, the EEClip software runs, showing the interface on the left picture.



INSTALLATION TROUBLESHOOTING

If the browser shows the screen on the left, then it cannot handle automatic EEClip software installation. You need to download and install at least **Microsoft .NET Framework 3.5 SP1**.

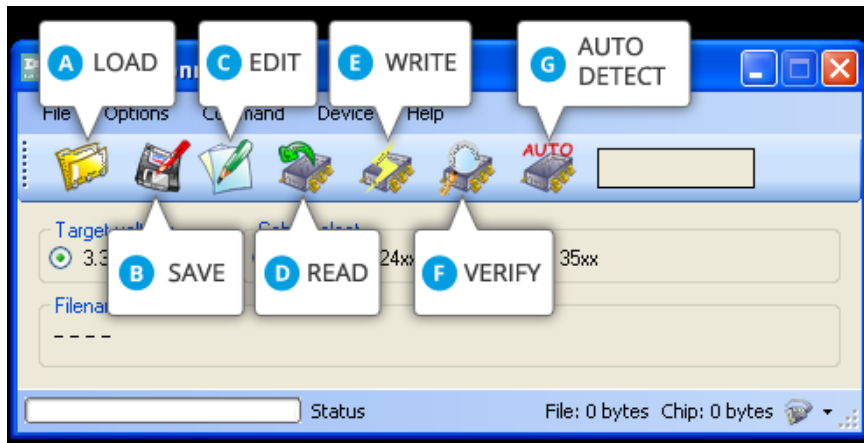


Windows XP / Vista

download from <http://www.microsoft.com/download/en/details.aspx?id=21>
Windows 7

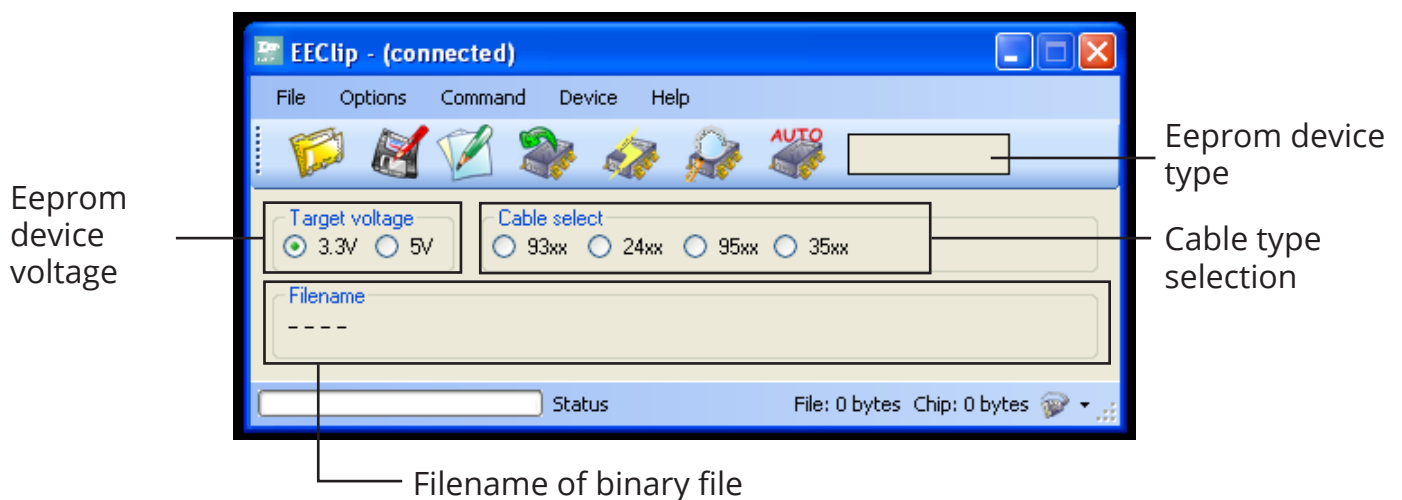
Windows 7 includes the .NET Framework 3.5.1 as an OS component

EECLIP SOFTWARE

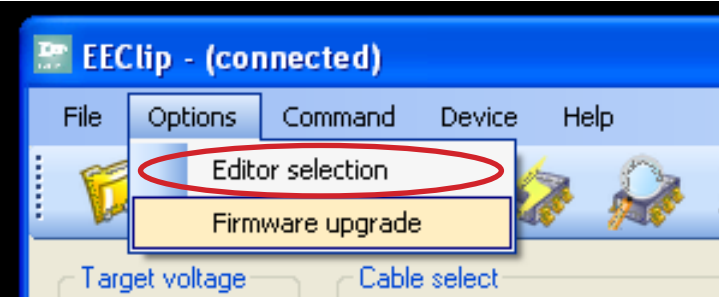


Toolbar icons with program interface.


A	Load binary file	Loads a binary file from the computer (usually with .bin extension) into the edit buffer
B	Save binary file	Save edit buffer to a file on the computer
C	Edit buffer	Edit buffer with the chosen hex editor
D	Read from device	Read connected eeprom device and store content in the edit buffer
E	Write to device	Write the edit buffer to the connected eeprom device
F	Verify device	Compare edit buffer content with the connected eeprom device content
G	Auto detect device	Automatically recognizes the connected eeprom device



HEX EDITOR SELECTION

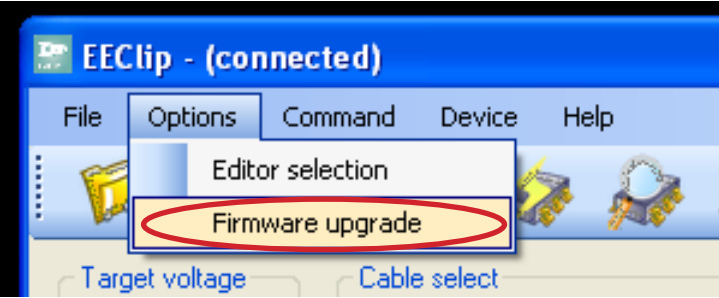


EEClip can be used with any hexadecimal editor (010 Editor, HxD, ...). At the first run you must select which editor to use from **Options > Editor Selection** menu item.



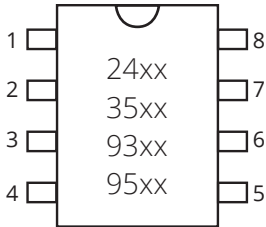
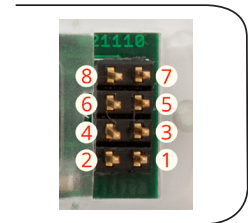
Recommended:
HxD Hex Editor

FIRMWARE UPGRADE



EEClip can be upgraded clicking on **Options > Firmware upgrade**. The software automatically connects to EEClip server to download and install latest firmware version. It may be useful if certain devices couldn't be autodetected.

EEPROM CONNECTION CHARTS



EEClip to 24xx connection

Pin	Function	24xx pin num
1	Sda	5
2	Mode/W	7
3		
4	Gnd	1/2/3/4
5	Scl	6
6		
7	Sda	5
8	Vcc	8

EEClip to 93xx connection

Pin	Function	93xx pin num
1	Q	4
2	Org	6
3	S	1
4	Gnd	5
5	Clk	2
6	Du	7
7	D	3
8	Vcc	8

EEClip to 35xx connection

Pin	Function	35xx pin num
1	Q	4
2	W	3
3	S	2
4	Gnd	1
5	Clk	6
6		
7	D	7
8	Vcc	8

EEClip to 95xx connection

Pin	Function	95xx pin num
1	Q	2
2	W	3
3	S	1
4	Gnd	4
5	Clk	6
6	Hold	7
7	D	5
8	Vcc	8

TROUBLESHOOTING

Problems

Solutions

- | Problems | Solutions |
|---|---|
| 1 The eeprom is not automatically recognized | <ul style="list-style-type: none">• the eeprom is dirty, try to clean the contacts• the eeprom is not well pinched• the eeprom has lost the appropriate data for autodetect• the eeprom is not supported yet by the EEClip firmware (click on Options > Firmware upgrade) |
| 2 The editor is not opened for binary files modification | <ul style="list-style-type: none">• No editor has been selected (click on Options > Editor selection) |
| 3 Memory reading errors | <ul style="list-style-type: none">• The specified voltage is incorrect (3.3V – 5V)• the eeprom is not well pinched• The right device hasn't been detected (update firmware and repeat the autodetect or manually indicate the device type) |
| 4 Memory writing errors | <ul style="list-style-type: none">• the eeprom is not well pinched• trying to write the wrong device• the eeprom is damaged |



To download EEClip software and drivers
go to:

www.eeclip.com

SAVI Elettronica Srl - Società Unipersonale
C/da Popoleto, 14/B
70011 Alberobello (Ba) - Italy

Phone +39 080 4324023 / +39 080 2221223
Fax +39 080 4327154 / +39 080 2221224

www.mte.net - info@mte.net

C.F. / P.IVA / N.I. Reg.Imp.Bari 05948750723
Capitale sociale € 20.000,00 I.V.

The contents of this document (texts, graphics, photographs) are property of Savi Elettronica Srl and are protected by Italian and international copyright laws. Copy and reproduction is granted only for personal use. Any other use (commercial, educational, etc) is forbidden and must be previously approved by the author.

All trademarks referred in this catalog are property of their respective owners and are used solely for identification or description of the goods and services.